
**Trapez 3**

Item no. 11205-03

 With pre-installed EPDM  
 rubber strips (UV resistant)

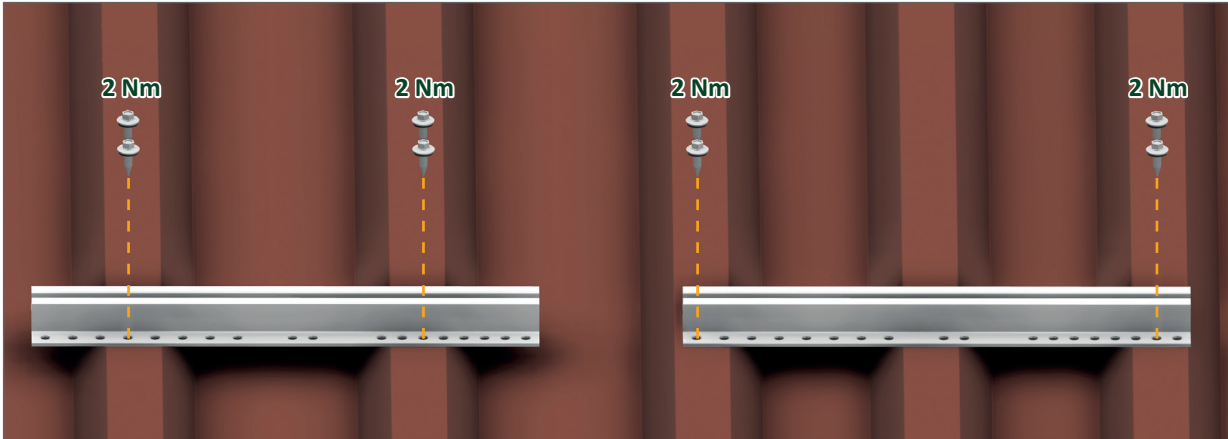

### Your advantages with our products

- » Convenient and time-saving installation from the top
- » 370 mm long rail can span over several ribs
- » Installation on top of the rib ensures best accessibility and greatest possible distance from the waterbearing layer
- » Vertical module mounting; horizontal mounting requires the use of Support Plates (item no. 91701-00)
- » Optional: Use Cross Connector to install additional RAILS
- » Optional: Potential Equalization Plate
- » Pre-installed EPDM rubber is UV-resistant and ensures water-sealing of the attachment
- » Self-tapping screws incl. EPDM sealing washer available separately
- » Material: Aluminum, EPDM rubber

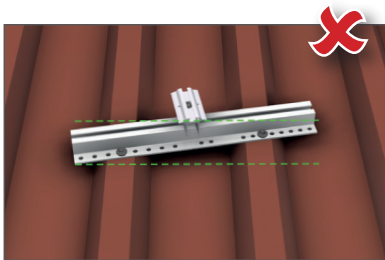
\*Our warranty conditions apply.  
 They are available at [www.sl-rack.com](http://www.sl-rack.com)

**Installation**

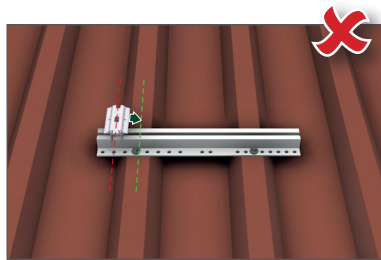
1. Position Trapez 3 according to the structural report perpendicular to the ribs, with the greatest possible overhang.



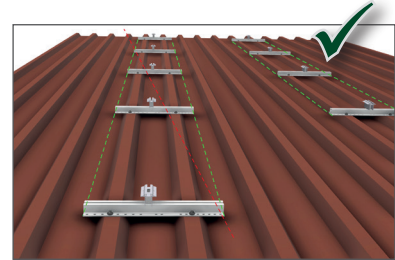
The attachments should always be positioned symmetrically.



Always attach perpendicular to the rib.

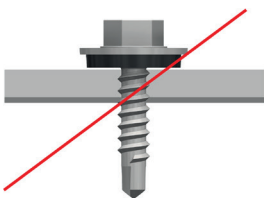


Due to statics, module clamping in the edge area is not permitted.

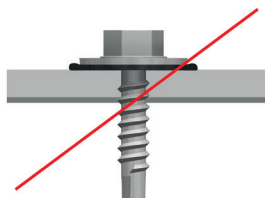


Install Trapez 3 always parallel, if possible in a straight line.

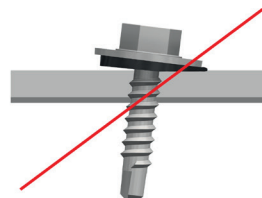
2. Place the separately available self-drilling screw incl. EPDM sealing washer exactly at a 90° angle to the rib and fixate it with a tightening torque of 2 Nm with a cordless screw driver with depth stop. This is the only way to ensure a water-sealing connection through the pre-installed EPDM rubber strip on the bottom. Pay special attention to the sealing washer. The screw must not be tightened either too loosely, nor too tightly, so that the sealing washer can perform its function optimally. Incorrect tightening can quickly lead to leaks.



too loose



too tight



oblique



correct



**Note:** Once the screw has been installed, it must not be loosened and screwed into the same hole again.

3. Place the module onto the rail and press the claw of the end clamp into the rail channel. Now fixate the end clamp with Torx 40 with a tightening torque of 6 Nm.
4. Use mid clamps between the modules and also fixate them with a tightening torque of 6 Nm. Finalize the row of modules in portrait orientation with an end clamp.
5. Optionally, the modules can be installed in landscape orientation by utilizing the Support Plate (item no. 91701-00).
6. Optionally a cross-rail system can be created by additionally using cross connectors and continuous rails.

**Accessories**



Item no.

**93155-25 Self-tapping screw 5.5 x 20-25, sealing washer Ø 16 mm**

Drilling capacity steel..... 0.5 mm - 2.0 mm  
 Drilling capacity aluminum..... 0.5 mm - 2.0 mm  
 Packaging unit (PU)..... 100 pieces

**93160-25 Self-tapping screw 6.0 x 25-25, sealing washer Ø 16 mm**

Drilling capacity steel..... 0.4 mm - 2.0 mm  
 Drilling capacity aluminum..... 0.5 mm - 2.0 mm  
 Packaging unit (PU).....100 pieces

**93161-25 PREMIUM Self-tapping screw 6.0 x 25, sealing washer Ø 16 mm**

Drilling capacity steel.....0.5 mm - 1.5 mm  
 Drilling capacity aluminum.....0.4 mm - 2.0 mm  
 Packaging unit (PU).....100 pieces



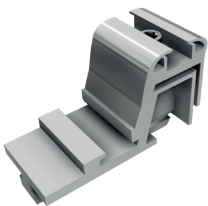
**93155-26 Self-drilling screw 5.5 x 25, sealing washer Ø 16 mm**

Drilling capacity steel..... 0.4 mm - 1.5 mm  
 Drilling capacity aluminum..... 0.4 mm - 5.0 mm  
 Packaging unit (PU)..... 100 pieces



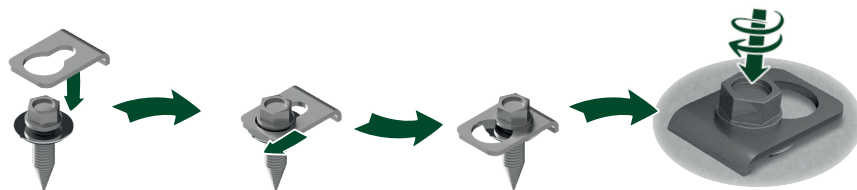
Beware of metal swarf on the roof!

**91202-00 Cross Connector**



**93201-00 Potential Equalization Plate**

The Potential Equalization Plate transfers the potential of the system/modules to the trapezoidal roof, provided that the trapezoidal sheet metal roof is already grounded. The Potential Equalization Plate has to be placed between the screw head and the sealing washer.







**Technical Data**

<b>Material</b>	Aluminum, EPDM rubber (sealing)
<b>Design Tool</b>	SL-Rack-Configurator <b>Solar.Pro.Tool</b> .
<b>Statik</b>	The statics calculation takes place as per the current country-specific standards (EN 1991, EC1 for Germany). Depending on snow or wind loads or for large modules, it may be necessary to use more than the standard 4 attachment points. Please make sure to comply with the instructions of the module manufacturer contained in the installation manual. We do not assess the load-bearing capacity of the roof.



We want to make your everyday work easier.  
Your praise, criticism and suggestions for improvement help us to do this. We look forward to your feedback.



SL Rack **Feedback**  
[Provide Feedback >](#)



SL Rack **Website**  
[Check it out >](#)



SL Rack **YouTube**  
[Watch videos >](#)

Find us on



Subject to technical changes  
and misprints.  
Version 07/2023 V13